

INSTALLATION INSTRUCTIONS

****Installation recommendation:**

JBA recommends in most cases that the vehicle be taken to a reputable exhaust shop.

40-9014

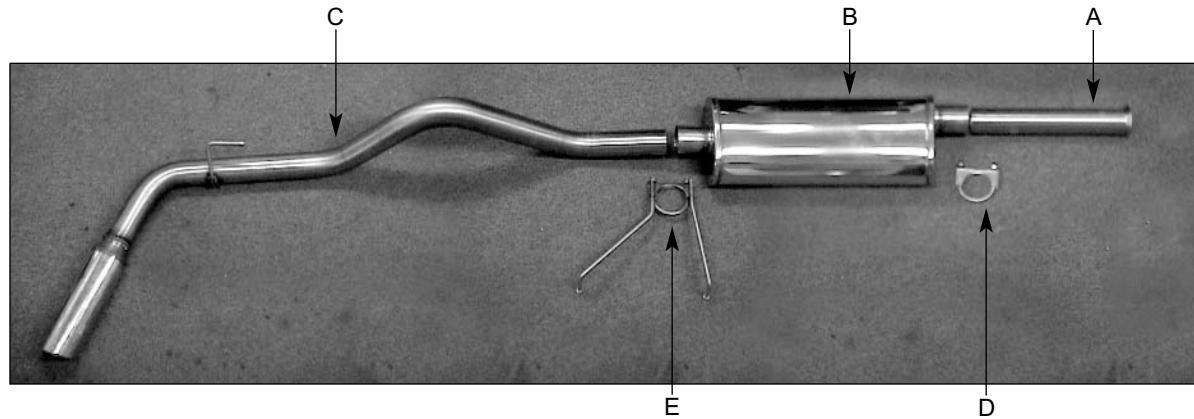
2000 Toyota Tundra
V8-4.7L 2/4 WD Ext Cab/Std. Bed

Parts List

A. Head pipe	1
B. Muffler, oval	1
C. Tail pipe with tip	1
D. 2-1/2" clamp	1
E. 2-1/2" rear muffler clamp/hanger	1

TOOLS RECOMMENDED:

3/8" drive ratchet
9/16 deep wall socket
12mm socket
channel lock pliers, 10"
rubber mallet
reciprocating saw or hack saw
spray lubricant or penetrating oil
anti-seize

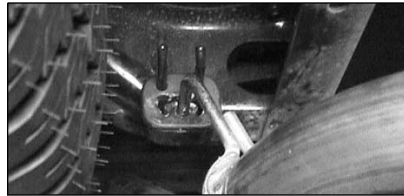


TO START:

1. Remove and inventory new JBA exhaust.
2. Disconnect negative battery cable and allow vehicle exhaust to cool.



3. With vehicle raised and properly supported, using a reciprocating saw or hack saw, cut the tail pipe approximately 2" behind muffler. See note #2.



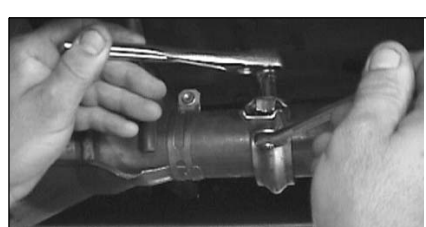
4. Spray lubricant on rear tail pipe hanger rod at lower hole in rubber grommet.



5. Remove rear tail pipe hanger rod from lower hole in rubber grommet.



6. Remove tail pipe assembly from rear of vehicle.



7. Using a 12mm socket, remove bolt from coupling clamp in front of muffler.



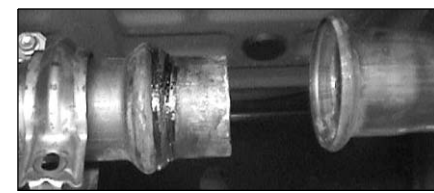
8. Spread clamp open just enough to slide forward off coupling flair.



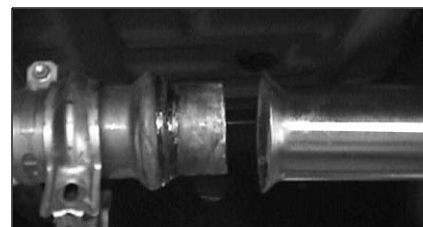
9. Spray lubricant on rear muffler hanger rods at lower hole in rubber grommets.



10. With muffler properly supported, remove rear muffler hanger rods from lower holes in rubber grommets using channel lock pliers.



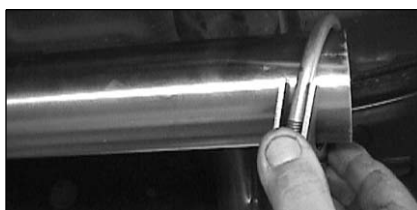
11. Without damaging gasket seal, remove muffler assembly from coupling slip joint.



12. Install JBA head pipe (A) tapping it on with a rubber mallet making sure it is seated on the gasket.



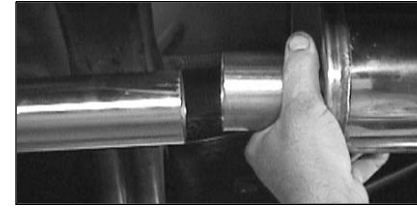
13. Install coupling clamp over flare connection and tighten using a 12mm socket.



14. Install the 2-1/2" clamp (D) over end of head pipe.



15. Install rear muffler clamp/hanger (E) into lower holes in rubber grommets.



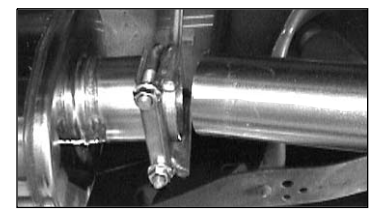
16. Install muffler (B) on head pipe (A) with offset slip joint forward and to the bottom.



17. Slip rear muffler clamp/hanger (E) over end of muffler (B) rear slip joint and hand tighten only at this time. NOTE: USE ANTI-SEIZE ON ALL THREADS.



18. Position muffler making sure it is straight up and down. Tighten 2-1/2" clamp (D) completely using a 9/16" socket. NOTE: USE ANTI-SEIZE ON ALL THREADS



19. Install tailpipe (C) from rear of vehicle slipping into rear of muffler. Slip rear tail pipe hanger rod into lower hole in rubber grommet.



20. Rotate tail pipe to desired position, leaving clearance on rear body panel.



21. Tighten 2-1/2" clamp/hanger (E) completely using a 9/16" socket. NOTE: USE ANTI-SEIZE ON ALL THREADS.

22. After installation, it is recommended that all clamps be retightened.

23. Tack weld all slip connections in three spots.

24. Using a soft cloth, remove all prints from turnout tip (D).

25. Lower vehicle and reattach the negative battery cable.

NOTES:

- 1) Use anti-seize on threads of clamps (D) and (E). Nut will gaul if not used.

- 2) If vehicle is properly raised high enough, step #3 can be eliminated and exhaust system can be removed in one piece.